

## **Pielikums 2-Apgaismojuma aprēķins**

Tērvetes iela, Ventspilī

Date: 27.07.2016  
Operator: Jeļena Stepčenko



Operator Jeļena Stepčenko  
Telephone  
Fax  
e-Mail

## Table of contents

### **Pielikums 2-Apgaismojuma aprēķins**

Project Cover	1
Table of contents	2
Luminaire parts list	3
<b>Ventspils, Tērvetes iela</b>	
Planning data	4
Luminaire parts list	5
Photometric Results	6
<b>Valuation Fields</b>	
<b>Brauktuve</b>	
<b>Observer</b>	
<b>Observer 1</b>	
Isolines (L)	8
<b>Observer 2</b>	
Isolines (L)	9

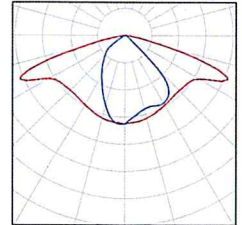


Operator Jeļena Stepčenko  
Telephone  
Fax  
e-Mail

## Pielikums 2-Apgaismojuma aprēķins / Luminaire parts list

6 Pieces CREE XSPB02210A--K\_24-Q9 3000K XSP1 - A -  
Type 210 - Q9 3000K  
Article No.: XSPB02210A--K\_24-Q9 3000K  
Luminous flux (Luminaire): 4220 lm  
Luminous flux (Lamps): 4539 lm  
Luminaire Wattage: 53.0 W  
Luminaire classification according to CIE: 100  
CIE flux code: 45 77 97 100 93  
Fitting: 1 x 5 LED MD-A Q9 3K 6V (Correction  
Factor 1.000).

See our luminaire  
catalog for an image of  
the luminaire.





Operator Jeļena Stepčenko  
 Telephone  
 Fax  
 e-Mail

## Ventspils, Tērvetes iela / Planning data

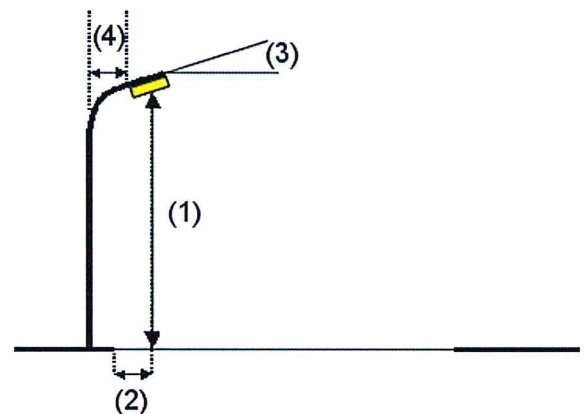
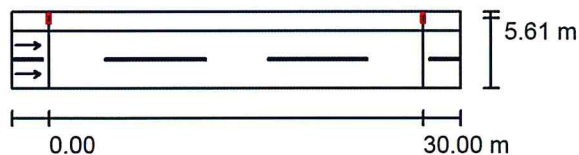
### Street Profile

Ietve (Width: 1.500 m)

Brauktuve (Width: 4.600 m, Number of lanes: 2, tarmac: R3, q0: 0.070)

Maintenance factor: 0.90

### Luminaire Arrangements



Luminaire:	CREE XSPB02210A--K_24-Q9 3000K XSP1 - A - Type 210 - Q9 3000K
Luminous flux (Luminaire):	4220 lm
Luminous flux (Lamps):	4539 lm
Luminaire Wattage:	53.0 W
Arrangement:	Single row, top
Pole Distance:	30.000 m
Mounting Height (1):	8.000 m
Height:	7.900 m
Overhang (2):	-1.000 m
Boom Angle (3):	5.0 °
Boom Length (4):	1.000 m

#### Maximum luminous intensities

at 70°: 701 cd/klm

at 80°: 207 cd/klm

at 90°: 2.65 cd/klm

Any direction forming the specified angle from the downward vertical, with the luminaire installed for use.

No luminous intensities above 95°.

Arrangement complies with glare index class D.5.

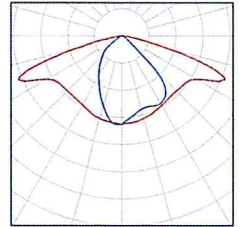


Operator Jeļena Stepčenko  
Telephone  
Fax  
e-Mail

## Ventspils, Tērvetes iela / Luminaire parts list

CREE XSPB02210A--K\_24-Q9 3000K XSP1 - A -  
Type 210 - Q9 3000K  
Article No.: XSPB02210A--K\_24-Q9 3000K  
Luminous flux (Luminaire): 4220 lm  
Luminous flux (Lamps): 4539 lm  
Luminaire Wattage: 53.0 W  
Luminaire classification according to CIE: 100  
CIE flux code: 45 77 97 100 93  
Fitting: 1 x 5 LED MD-A Q9 3K 6V (Correction  
Factor 1.000).

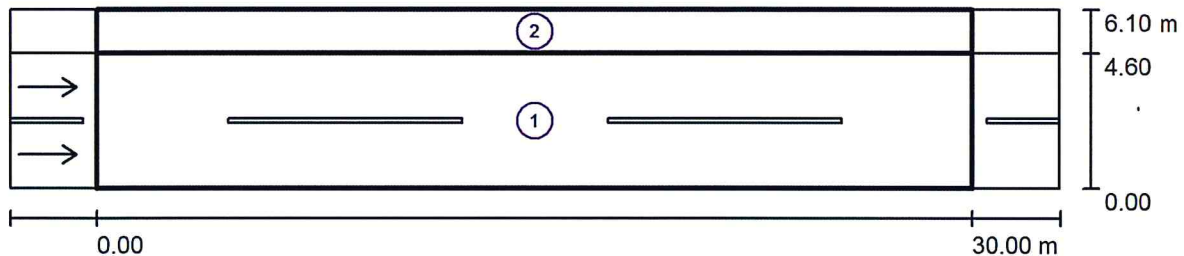
See our luminaire  
catalog for an image of  
the luminaire.





Operator Jelena Stepčenko  
 Telephone  
 Fax  
 e-Mail

## Ventspils, Tērvetes iela / Photometric Results



Maintenance factor: 0.90

Scale 1:258

### Calculation Field List

- 1 Brauktuve  
 Length: 30.000 m, Width: 4.600 m  
 Grid: 10 x 6 Points  
 Accompanying Street Elements: Brauktuve.  
 tarmac: R3, q0: 0.070  
 Selected Lighting Class: ME6

(All lighting performance requirements are met.)

	$L_{av}$ [cd/m <sup>2</sup> ]	U0	UI	TI [%]	SR
Calculated values:	0.66	0.66	0.85	12	0.86
Required values according to class:	$\geq 0.30$	$\geq 0.35$	$\geq 0.40$	$\leq 15$	/
Fulfilled/Not fulfilled:	✓	✓	✓	✓	✓



Operator Jeļena Stepčenko  
Telephone  
Fax  
e-Mail

## Ventspils, Tērvetes iela / Photometric Results

### Calculation Field List

- 2 Ietve  
Length: 30.000 m, Width: 1.500 m  
Grid: 10 x 3 Points  
Accompanying Street Elements: Ietve.  
Selected Lighting Class: CE5

(All lighting performance requirements are met.)

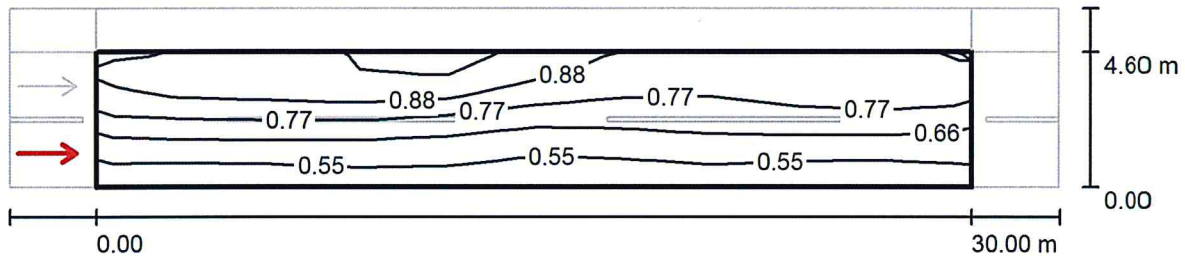
Calculated values:  
Required values according to class:  
Fulfilled/Not fulfilled:

$E_{av}$ [lx]	U0
10.01	0.42
$\geq 7.50$	$\geq 0.40$
✓	✓



Operator Jeļena Stepčenko  
 Telephone  
 Fax  
 e-Mail

### Ventspils, Tērvetes iela / Brauktuve / Observer 1 / Isolines (L)



Values in Candela/m<sup>2</sup>, Scale 1 : 258

Grid: 10 x 6 Points

Observer Position: (-60.000 m, 1.150 m, 1.500 m)

tarmac: R3, q0: 0.070

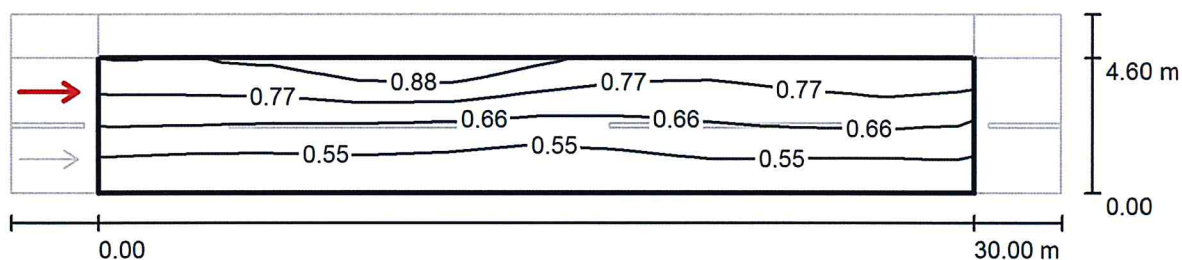
	$L_{av}$ [cd/m <sup>2</sup> ]	U0	UI	TI [%]
Calculated values:	0.73	0.66	0.89	10
Required values according to class ME6:	≥ 0.30	≥ 0.35	≥ 0.40	≤ 15
Fulfilled/Not fulfilled:	✓	✓	✓	✓





Operator Jeļena Stepčenko  
 Telephone  
 Fax  
 e-Mail

### Ventspils, Tērvetes iela / Brauktuve / Observer 2 / Isolines (L)



Values in Candela/m<sup>2</sup>, Scale 1 : 258

Grid: 10 x 6 Points

Observer Position: (-60.000 m, 3.450 m, 1.500 m)

tarmac: R3, q0: 0.070

	$L_{av}$ [cd/m <sup>2</sup> ]	U0	UI	TI [%]
Calculated values:	0.66	0.68	0.85	12
Required values according to class ME6:	≥ 0.30	≥ 0.35	≥ 0.40	≤ 15
Fulfilled/Not fulfilled:	✓	✓	✓	✓



Operator Jelena Stepčenko  
Telephone  
Fax  
e-Mail

## Ventspils, Tērvetes iela / False Colour Rendering

